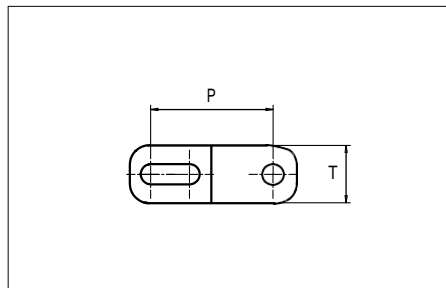


# Plastic Modular Belt

Series **uni Flex ASB**

Type **43% Open (Radius 2.2)**



Sideflexing belt  
Nominal pitch: 25.4 mm (1.00 in)  
Surface type: Flat  
Surface opening: 43%  
Backflex radius: 25.0 mm (0.98 in)  
Pin diameter: 4.0 mm (0.16 in)  
Min. inside radius: 2.2 x belt width

Belt material & color	POM-D W <b>B</b>	PP W <b>B</b> <b>G</b>		mm	in	
	Pin and lock material & color		 PA6.6 <b>B</b>	P (Nominal)	25.4	1.00
				T	12.0	0.47

Non standard material and color: See uni Material and Color Overview.

Alternative pin and lock systems and materials: Contact Customer Service.

Belt width		Permissible tensile force (Belt/pin material)								Belt weight (Belt/pin material)				*Min. No. drive sprocket per shaft	Number of wear strips (Min. No.)	
		POM-D/PA6.6				PP/PA6.6				POM-D/PA6.6		PP/PA6.6			**Carry (pcs)	**Return (pcs)
		Straight sections		Curve sections		Straight sections		Curve sections		kg/m	lb/ft	kg/m	lb/ft			
mm	in	N	lbf	N	lbf	N	lbf	N	lbf	kg/m	lb/ft	kg/m	lb/ft			
149	5.9	2801	630	1200	270	1863	419	720	162	1.2	0.82	0.8	0.52	2	2	2
162	6.4	3046	685	1200	270	2025	455	720	162	1.3	0.89	0.8	0.57	2	2	2
226	8.9	4249	955	1200	270	2825	635	720	162	1.9	1.25	1.2	0.79	2	2	2
302	11.9	5678	1276	1600	360	3775	849	960	216	2.5	1.66	1.6	1.06	3	3	2
379	14.9	7125	1602	1600	360	4738	1065	960	216	3.1	2.09	2.0	1.32	3	3	2
455	17.9	8554	1923	1600	360	5688	1279	960	216	3.7	2.51	2.4	1.59	5	4	2
531	20.9	9983	2244	2040	459	6638	1492	1224	275	4.4	2.93	2.8	1.86	5	4	2
608	23.9	11430	2570	2040	459	7600	1708	1224	275	5.0	3.35	3.2	2.12	5	5	3
684	26.9	12859	2891	2040	459	8550	1922	1224	275	5.6	3.77	3.6	2.39	5	5	3
761	30.0	14307	3216	2040	459	9513	2138	1224	275	6.2	4.19	4.0	2.66	7	6	3
837	33.0	15736	3537	2040	459	10463	2352	1224	275	6.9	4.61	4.4	2.93	7	6	3
914	36.0	17183	3863	2040	459	11425	2568	1224	275	7.5	5.04	4.8	3.19	7	7	4

Additional standard belt widths are available in steps of 76.4 mm (3.01 in). Additional non-standard belt widths are available in steps of 12.7 mm (0.50 in).

1449	57.0	27241	6124	2040	459	18113	4072	1224	275	11.9	7.99	7.5	5.06	11	10	5
------	------	-------	------	------	-----	-------	------	------	-----	------	------	-----	------	----	----	---

Additional standard belt widths are available in steps of 76.4 mm (3.01 in). Additional non-standard belt widths are available in steps of 12.7 mm (0.50 in).


1984	78.1	37299	8385	2040	459	24800	5575	1224	275	16.3	10.93	10.3	6.93	15	14	7
------	------	-------	------	------	-----	-------	------	------	-----	------	-------	------	------	----	----	---

General belt tolerance is +0/-0.4% at 23°C/73°F. For exact belt width contact Customer Service. Non standard belt width on request

\*Max. Load per Drive Sprocket. Belt material: POM-D 2000 N (450 lbf), PP 1100 N (247 lbf)

\*\*Max. Spacing between wear strips, Carry: 152.0 mm (6.00 in); Return: 304.0 mm (12.00 in)

Max. Belt width with Flex ASB R1.6: 1296.0 mm (51.00 in)

 = Single Link



STANDARD

SIDE FLEXING

PITCH 25.4 MM/1.00 IN

Distribué par :



## Accessories

### Rubber Top

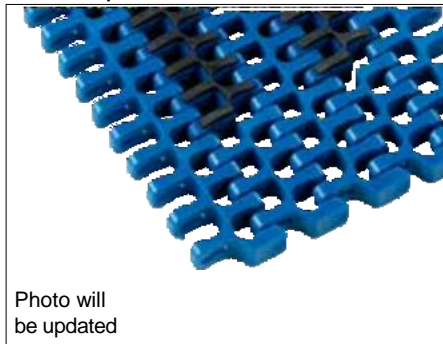


Photo will be updated

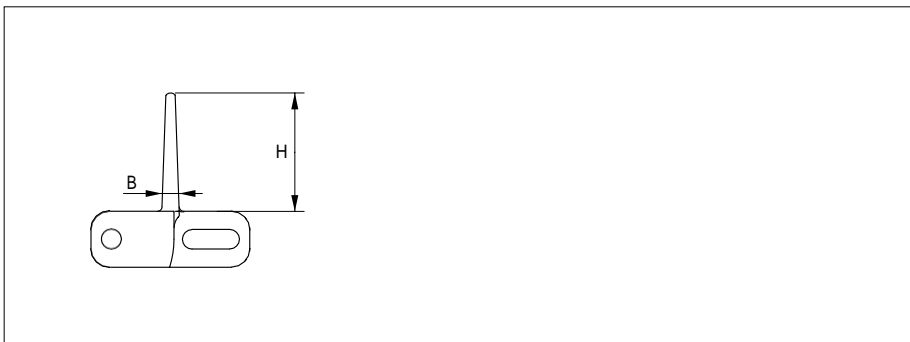
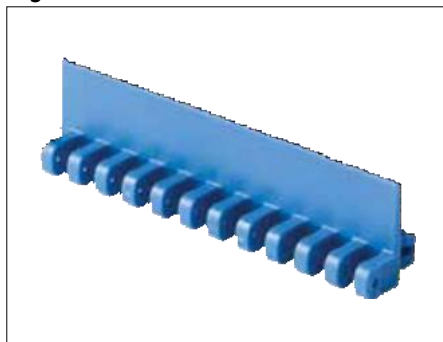


Type	Belt material & color	Rubber material, hardness & color	V	
			mm	in
Curved	PP <b>B</b>	TPE-S Shore A60 <b>K</b>	3.0	0.12
	PP <b>W</b>	TPE-S Shore A60 <b>N</b>		

uni Flex ASB Rubber Top Radius 2.2: Indent min. 44.0 mm (1.73 in) and Increment 12.7 mm (0.50 in).

## Accessories

### Flight



Type	Flight Material & color	B		H		Link size	Width	
		mm	in	mm	in		mm	in
Flat	POM-D <b>B</b> <b>W</b>	3.7	0.15	25.4	1.00	K600	151.0	5.94

Min. indent for Flight is: 44.0 mm (1.73 in) and Increment 12.7 mm (0.50 in).

Non Standard material and color: See uni Material and Color Overview.

Distribué par :

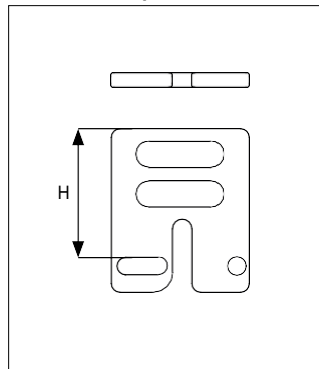


## Accessories

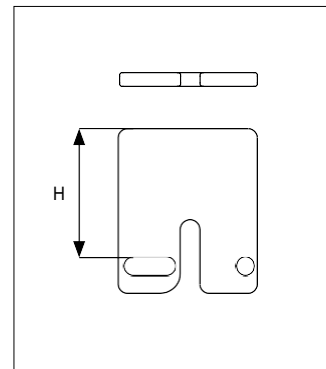
### Side Guard



### Side Guard Open



### Side Guard Closed

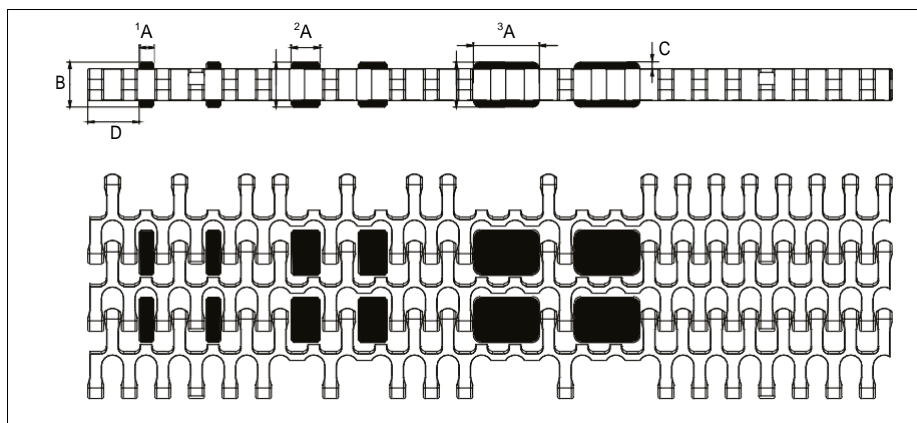
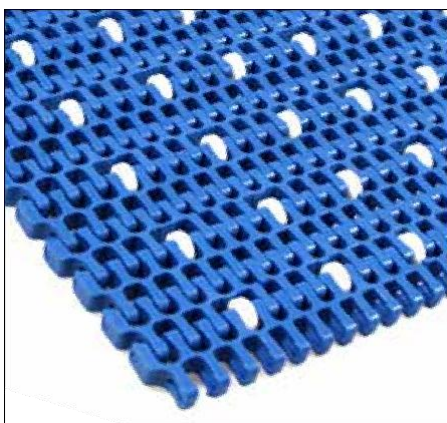


Type	Side Guard Material & color	H	
		mm	in
Side Guard Closed	POM-D <b>B</b>	25.4	1.00
Side Guard Open			

Min. indent for Side Guard is: 44.0 mm (1.73 in) and Increment 12.7 mm (0.50 in).  
 Non Standard material and color: See uni Material and Color Overview.

## Accessories

### Roller



Type	Roller material & color	A		B		C		D*	
		mm	in	mm	in	mm	in	mm	in
Plastic	POM-D <b>W</b>	<sup>1</sup> 5.5	0.22	17.0	0.67	2.50	0.10	57.3	2.26
		<sup>2</sup> 11.0	0.43						
		<sup>3</sup> 25.0	0.98						

Non standard Roller material and color: See uni Material and Color Overview.

Rollers can be placed with steps of 12.7 mm (0.5 in).

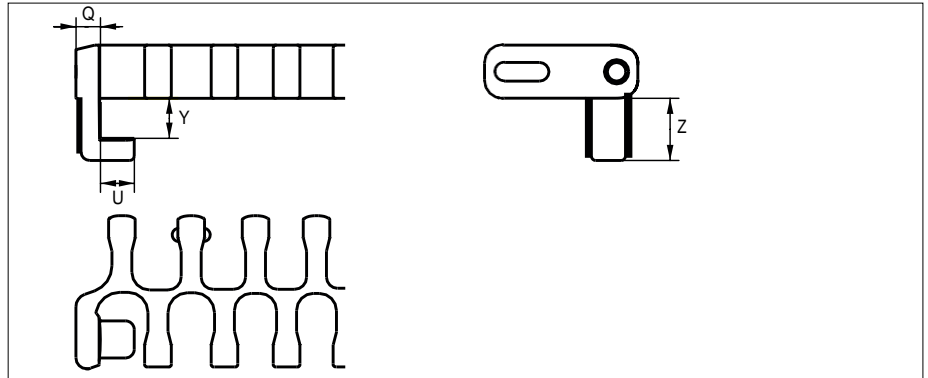
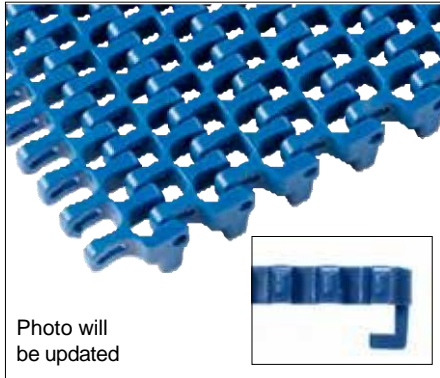
\*D = 57.3 mm (2.26 in) is minimum for collapse factor 2.2. Absolute min D is 44.6 mm (1.76 in) but collapse factor will then be bigger than 2.2.

Distribué par :

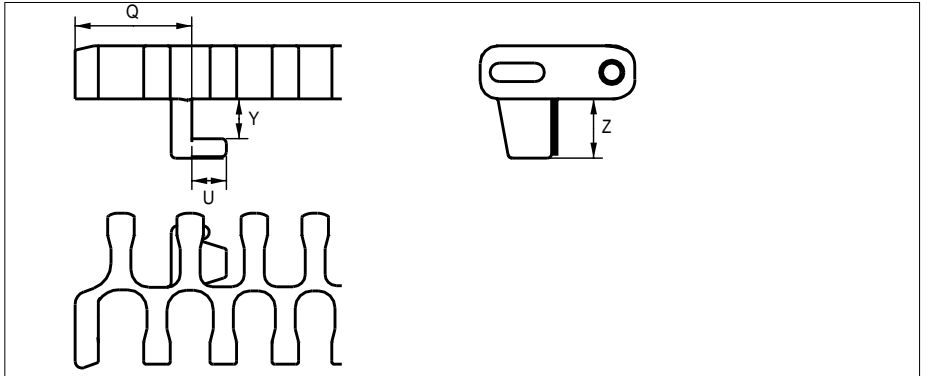
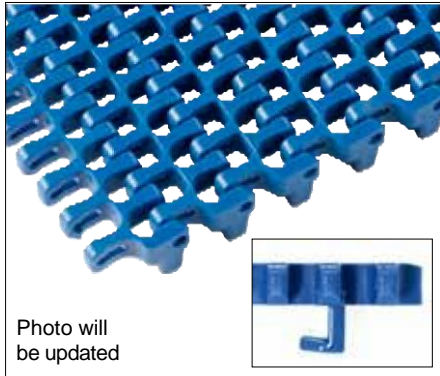


## Accessories

### Bottom Tab



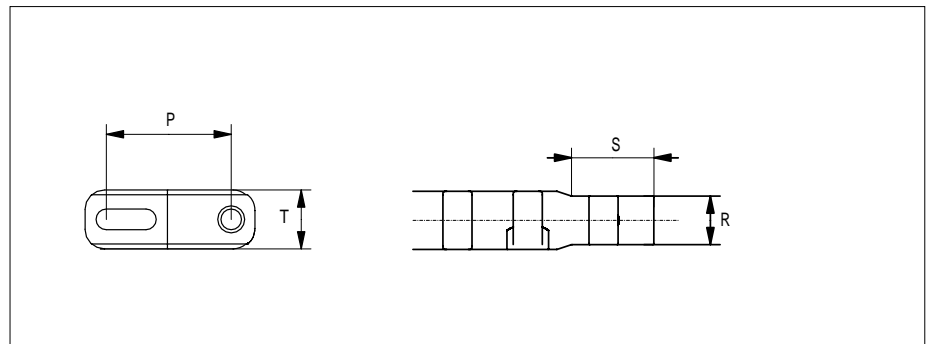
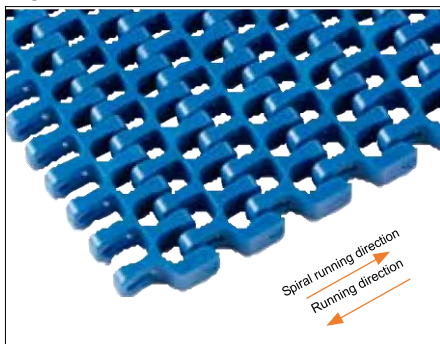
### Bottom Tab IL Style



Type	Tab Material & color		Q		U		Y		Z	
			mm	in	mm	in	mm	in	mm	in
Bottom Tab	POM-D <b>B</b> W	PP <b>B</b> W	5.5	0.22	7.5	0.30	9.0	0.35	14.0	0.55
Bottom Tab IL Style	POM-D <b>B</b> W	PP <b>B</b> W	26.5	1.04	7.8	0.30	9.0	0.35	13.4	0.53

## Accessories

### Edge Tab - NON STANDARD



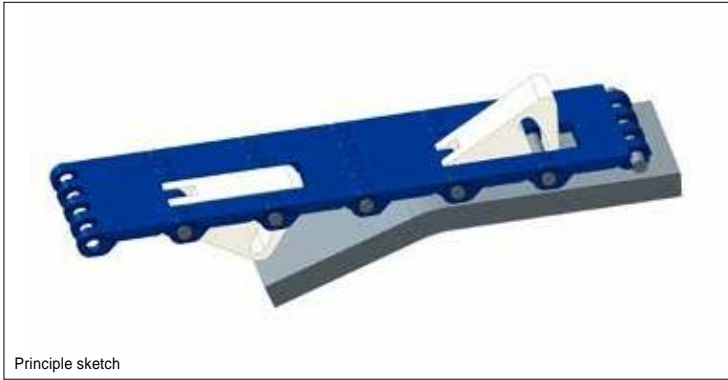
Type	Recommended Edge Tab Material & color	P		R		S		T	
		mm	in	mm	in	mm	in	mm	in
Edge Tab	POM-D <b>B</b> W	25.4	1.00	10.0	0.39	16.0	0.63	12.0	0.47

Min. indent for Flight is: 44.0 mm (1.73 in) and Increment 12.7 mm (0.50 in).

Non Standard material and color: See uni Material and Color Overview.

## Accessories

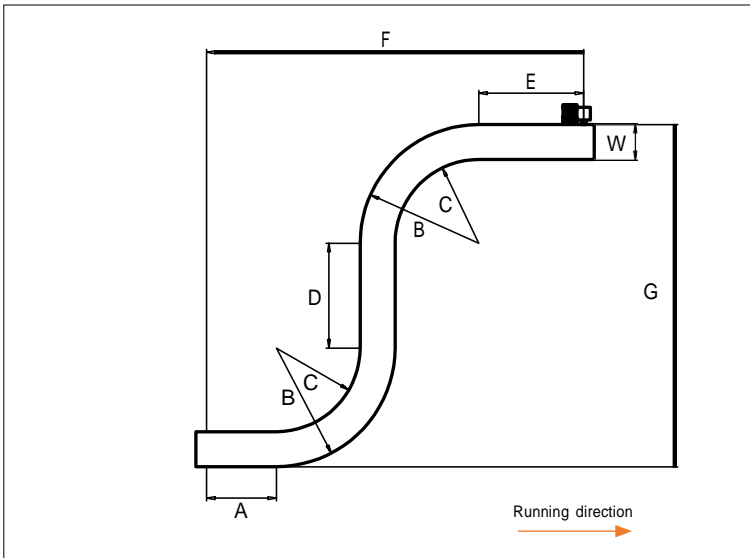
### Non Standard uni AmFlight



Principle sketch

Other Non Standard option: See uni AmFlight Overview.

### Design Guidelines



For min. conveyor dimensions please refer to sketch and diagram.

	uni Flex ASB R2.2
A	min. 1.5 x W
B	min. 3.2 x W
C	min. 2.2 x W
D	min. 2.0 x W
E	min. 2.0 x W
F	min. 8.9 x W
G	min. 8.4 x W

Distribué par :



## Sprocket

No. of teeth	Bore size										Overall diameter		Pitch diameter		Hub diameter		Dimension A		Dimension B		Double row/Two way	Machined PA6 N
	Pilot Bore		in	0.79	0.98	1.00	1.18	1.25	1.50	1.57												
	mm	in																				
Z07	✓		●	●	●						58.0	2.28	58.5	2.30	40.8	1.61	20.4	0.80	35.2	1.39	✓	✓
Z09	✓			●	●	●	●				75.0	2.95	74.3	2.93	57.8	2.28	28.9	1.14	43.1	1.70	✓	✓
Z12	✓			●	●	●	●	■			100.0	3.94	98.1	3.86	82.8	3.26	41.4	1.63	55.1	2.17	✓	✓
Z15	✓				●	●	●	■	●	■	124.6	4.91	122.2	4.81	107.4	4.23	53.8	2.12	67.1	2.64	✓	✓
Z18	✓					●	●	■	●	■	149.3	5.88	146.3	5.76	132.1	5.20	66.0	2.60	79.2	3.12	✓	✓

■ Machined sprocket

● Machined sprocket



Other sprocket sizes are available upon request.

Other bore sizes on sprockets are available upon request.

Round bores are always delivered with keyway.

Max. load per sprocket shown does not take bore size into account.

Please also ensure that sufficient size shaft is chosen for corresponding load.

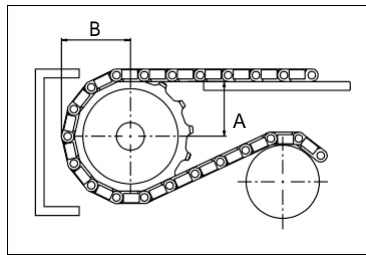
Width of tooth = Single row + double row: 7.0 mm (0.28 in)

Width of One-part sprocket = Double row: 30.0 mm (1.18 in)

## uni UltraClean Two-Part Sprocket

No. of teeth	Bore size		Overall diameter		Pitch-diameter		Hub-diameter		Dimension A		Dimension B		Single row/Two way	Moulded PA6
	in	1.57												
	mm	40.0												
Z12	■		100.0	3.94	98.1	3.86	80.0	3.15	41.4	1.63	55.1	2.17	✓	✓
Z15	■		124.6	4.91	122.2	4.81	80.0	3.15	53.8	2.12	67.1	2.64	✓	✓
Z18	■		149.3	5.88	146.3	5.76	80.0	3.15	66.0	2.60	79.2	3.12	✓	✓

■ Moulded uni UltraClean TwoPart Sprocket



Width of UltraClean two-part sprocket = Single row: 44.0 mm (1.73 in)

Width of UltraClean two-part tooth = Single double row: 7.0 mm (0.28 in)

uni Retainer Rings: See uni Retainer Ring data sheet.

For correct sprocket position: See uni Assembly Instructions for uni Flex ASB.

For more detailed sprocket information. contact Customer Service.