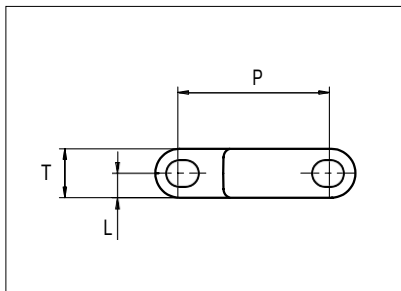
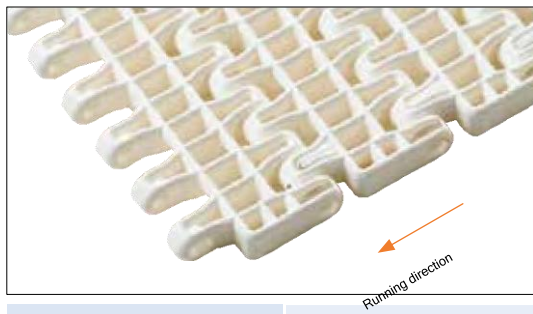




Plastic Modular Belt

Serie **uni L-SNB** Type **36%**



Straight Running
 Nominal pitch: 50.0 mm (1.97 in)
 Surface type: Flat
 Surface opening: 36%
 Backflex radius: 70.0 mm (2.80 in)
 Pin diameter: 8.0 mm (0.31 in)

Belt material & color	PP W		mm	in		mm	in	
Pin and lock material & color	PP W PP W		P (Nominal)	50.0	1.97	L	8.0	0.31
			T	16.0	0.63	-	-	-

Non standard material and color: See uni Material and Color Overview.

Alternative pin and lock materials: Pin: PE **W** SS304 PP **G**

Belt width		Permissible tensile force (Belt/pin material)		Belt weight (Belt/pin material)		*Min. No. drive sprocket per shaft	Number of wear strips (Min. No.)	
		PP		PP			**Carry (pcs)	**Return (pcs)
mm	in	N	lbf	kg/m	lb/ft			
153	6.0	2678	602	1.5	1.01	2	2	2
229	9.0	4009	901	2.2	1.51	2	2	2
305	12.0	5340	1200	3.0	2.01	3	3	2
381	15.0	6671	1500	3.7	2.51	3	3	2
457	18.0	8003	1799	4.5	3.01	4	4	2
533	21.0	9334	2098	5.2	3.51	4	4	2
609	24.0	10665	2398	6.0	4.01	5	5	3
686	27.0	11996	2697	6.7	4.51	5	5	3
762	30.0	13328	2996	7.5	5.02	6	6	3
838	33.0	14659	3295	8.2	5.52	6	6	3
914	36.0	15990	3595	9.0	6.02	7	7	4
990	39.0	17322	3894	9.7	6.52	7	7	4

Additional standard belt widths are available in steps of 76.1 mm (3.00 in).

1980	78.0	34650	7789	19.4	13.04	14	14	7
------	------	-------	------	------	-------	----	----	---

Additional standard belt widths are available in steps of 76.1 mm (3.00 in).

2969	116.9	51958	11680	29.1	19.55	20	20	10
------	-------	-------	-------	------	-------	----	----	----

General belt tolerance is +0/-0.4% at 23°C/73°F and 50% RH. For exact belt width contact Customer Service. Non standard belt width on request.

*Max. Load per Drive Sprocket. Belt material PP with snub roller 2000 N (450 lbf), PP without snub roller 1250 N (281 lbf)

**Max. Spacing between wear strips, Carry: 152 mm (6 in); Return: 304 mm (12 in)

***Load capacity per row of reinforcement links in the belt: 2500 N (562 lbf)

***Example: Belt with 8 rows of reinforcement links, permissible load is 8 x 2500 N (562 lbf) = 20000 N (4496 lbf)

= Single Link



STANDARD

STRAIGHT RUNNING

PITCH 50.0 MM/1.97 IN

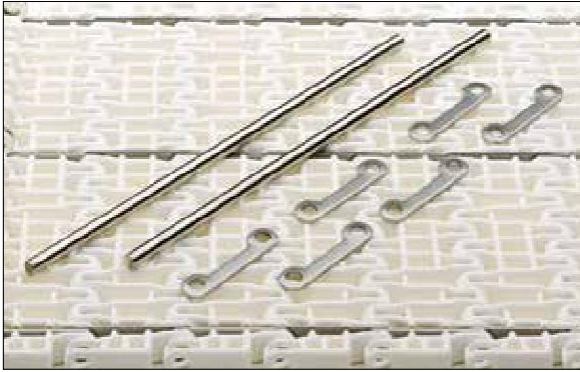
Distribué par :



COPIMEC Sarl au Capital de 8.000.000,00 dh / Adresse: N°237, Rue Oued Ziz - Quartier Industriel - Teldi - AGADIR - MAROC
 TEL : +212 5 28 84 75 61 - +212 5 28 84 75 62 - FAX : +212 5 28 84 73 00 E-mail: contact@copimec.com Web: www.copimec.com

Accessories

Reinforcement Link



The use of uni-chains belts with the SS reinforcement /pitch control links in blanchers, cookers and other high temperature applications will reduce belt elongation due to temperature by more than 90%. This will simplify the belt take-up system and reduce maintenance. uni-chains recommends three reinforcement links per K1200 module.
 Note: Reinforcement links require the use of SS pins.

Type	Material & color	N/row	Lbf/row
Steel Link	SS316	2500	562

Non Standard material and color: See uni Material and Color Overview.

Sprocket

No of teeth	Bore size														Overall diameter		Pitch-diameter		Hub-diameter		A-dimension		B-dimension		Single row/One way	Double row/Two way	Molded PA6 LG	Machined PA6 N
	Pilot bore		in	0.75	0.78	0.98	1.00	1.18	1.25	1.50	1.57	2.36	2.50	3.54														
	mm	19.1	20.0	25.0	25.4	30.0	31.8	38.1	40.0	60.0	63.5	90.0	mm	in	mm	in	mm	in	mm	in								
Z06	x					●	●	■	●			92.5	3.64	100.0	3.94	70.0	2.76	35.3	1.39	58.0	2.28	x		x				
Z08	x					●	●	■	●			128.7	5.07	130.7	5.15	70.0	2.76	52.4	2.06	73.3	2.89	x		x				
Z10	x					●	●	■	●			159.8	6.29	161.8	6.37	70.0	2.76	68.9	2.71	88.9	3.50	x		x				
Z10											■	159.8	6.29	161.8	6.37	120.0	4.72	68.9	2.71	88.9	3.50	x			x			
Z12	x					●		■	●			192.5	7.58	193.2	7.61	70.0	2.76	85.3	3.36	104.6	4.12	x		x				
Z12											■	192.5	7.58	193.2	7.61	120.0	4.72	85.3	3.36	104.6	4.12	x			x			
Z16	x					●		■	●		■	257.3	10.13	256.3	10.09	120.0	4.72	117.7	4.63	126.1	4.96	x			x			

■ Molded sprocket

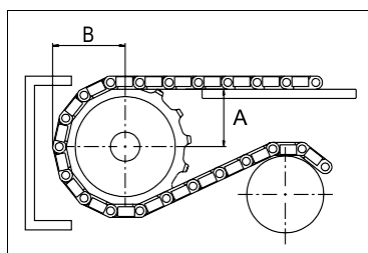
● Molded sprocket

■ Machined sprocket

● Machined sprocket



Non standard material and color: See uni Material and Color Overview.



Other sprocket sizes are available upon request.

Two-part sprocket are available upon request.

Round bores are always delivered with keyway.

Other bore sizes are available upon request.

uni Retainer Rings: See uni Retainer Ring data sheet

Width of tooth = 7.0 mm (0.28 in)

Width of sprocket = 42.3 mm (1.67 in)

Max load per sprocket shown does not take bore size into account.

Please also ensure that sufficient size shaft is chosen for corresponding load.

For correct sprocket position: See uni Assembly Instructions for uni L-SNB.

For more detailed sprocket information, contact Customer Service.

Ammeraal beltech - unichains - copimec

Distribué par :

