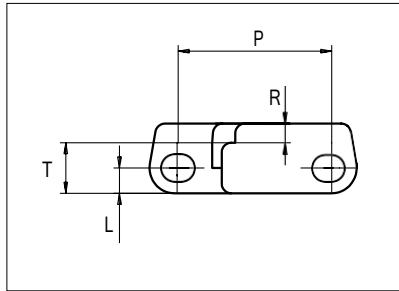
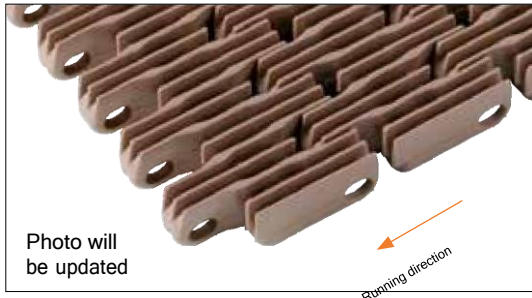




Plastic Modular Belt

Serie **uni L-SNB** Type **Rib 36%**



Straight running belt
 Nominal pitch: 50.0 mm (1.97 in)
 Surface type: Rib Top
 Surface opening: 36%
 Backflex radius: 140.0 mm (5.50 in)
 Pin diameter: 8.0 mm (0.31 in)

Belt material & color	PP G		PP-HW LB		mm	in	mm	in		
	Pin and lock material & color	PP W	PP G	PP-HW LB	PP-HW LB	P (Nominal)	50.0	1.97	T	16.0
					R	6.0	0.23	L	8.0	0.31

Non standard material and color: See uni Material and Color Overview.

Alternative pin and lock materials: Pin: PE **W** SS304

Belt width		Permissible tensile force (Belt/pin material)		Belt weight (Belt/pin material)		*Min. No. drive sprocket per shaft	Number of wear strips (Min. No.)	
		PP-HW/PP		PP-HW/PP			**Carry (pcs)	**Return (pcs)
mm	in	N	lbf	kg/m	lb/ft			
153	6.0	4559	1025	1.5	1.01	2	2	2
229	9.0	6826	1535	2.2	1.51	2	2	2
305	12.0	9093	2044	3.0	2.01	3	3	2
381	15.0	11360	2554	3.7	2.51	3	3	2
457	18.0	13627	3063	4.5	3.01	4	4	2
533	21.0	15894	3573	5.2	3.51	4	4	2
609	24.0	18161	4083	6.0	4.01	5	5	3
686	27.0	20428	4592	6.7	4.51	5	5	3
762	30.0	22695	5102	7.5	5.02	6	6	3
838	33.0	24962	5611	8.2	5.52	6	6	3
914	36.0	27229	6121	9.0	6.02	7	7	4
990	39.0	29496	6631	9.7	6.52	7	7	4

Additional standard belt widths are available in steps of 76.1 mm (3.00 in)

1980	78.0	59004	13264	19.4	13.04	14	14	7
------	------	-------	-------	------	-------	----	----	---

Additional standard belt widths are available in steps of 76.1 mm (3.00 in)

2969	116.9	88476	19889	29.1	19.55	20	20	10
------	-------	-------	-------	------	-------	----	----	----

General belt tolerance is +0/-0.4% at 23°C/73°F and 50% RH. For exact belt width contact Customer Service. Non standard belt width on request.

*Max. Load per Drive Sprocket. Belt material: PP-HW with snub roller 2000 N (450 lbf), PP-HW without snub roller 1250 N (281 lbf)

**Max. Spacing between wear strips, Carry: 152 mm (6 in.); Return: 304 mm (12 in.)

***Load capacity per row of reinforcement links in the belt: 2500 N (562 lbf)

***Example: Belt with 8 rows of reinforcement links, permissible load is 8 x 2500 N (562 lbf) = 20000 N (4496 lbf)

= Single Link



Distribué par :



COPIMEC Sarl au Capital de 8.000.000,00 dh / Adresse: N°237, Rue Oued Ziz - Quartier Industriel - Teldi - AGADIR - MAROC
 TEL : +212 5 28 84 75 61 - +212 5 28 84 75 62 - FAX : +212 5 28 84 73 00 E-mail: contact@copimec.com Web: www.copimec.com

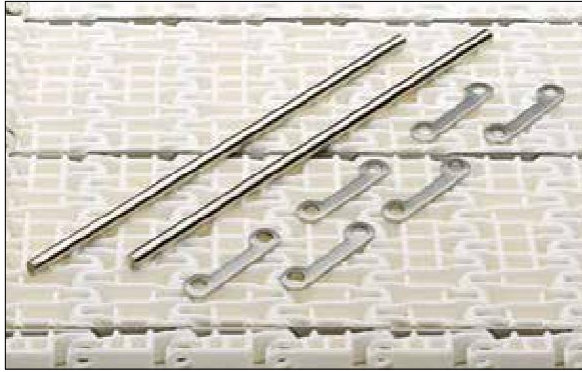
STANDARD

STRAIGHT RUNNING

PITCH 50.0 MM/1.97 IN

Accessories

Reinforcement Link



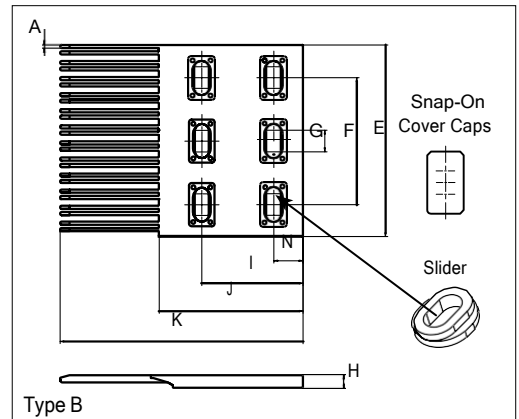
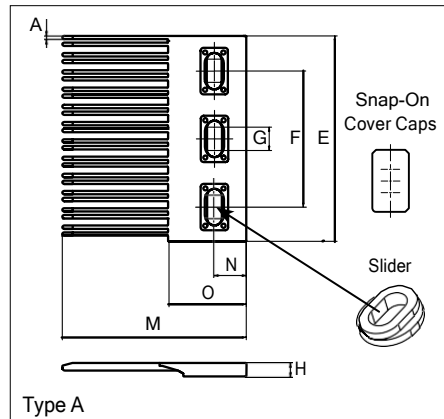
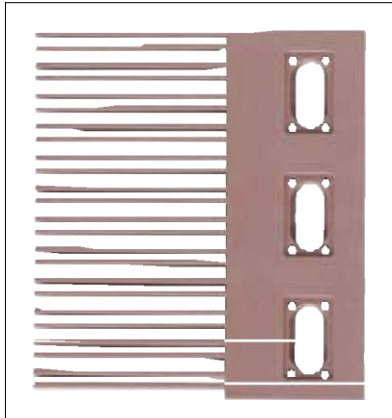
The use of uni-chains belts with the SS reinforcement /pitch control links in blanchers, cookers and other high temperature applications will reduce belt elongation due to temperature by more than 90%. This will simplify the belt take-up system and reduce maintenance. uni-chains recommends three reinforcement links per K1200 module.
Note: Reinforcement links require the use of SS pins.

Type	Material & color	N/row	Lbf/row
Steel Link	SS316	2500	562

Non Standard material and color: See uni Material and Color Overview.

Accessories

Finger Plates



Type	Material & color		A		E		F		G				
			mm	in	mm	in	mm	in	mm	in			
Single Sided 150x149	POM-LF BR	POM-DI G	2.5	0.10	152.1	5.99	100.3	3.95	12.0	0.47			
Single Sided 120x149													
H		I		J		K		M		N		O	
mm	in	mm	in	mm	in	mm	in	mm	in	mm	in	mm	in
10.0	0.39	80.0	3.15	114.0	4.49	192.0	7.56	135.0	5.31	23.0	0.91	57.0	6.18

All uni-chains belt systems are available in a raised rib version that can be supplied with matching finger plates, also called combs.

The finger plates are supplied with cover caps which can be attached when the finger plate has been installed. The cover caps can be removed by using a screwdriver that can be inserted between the cover and finger plate. In order to adjust to belt width variations caused by temperature fluctuations, a slider facilitates the sideways movement of the finger plates.

Non Standard material and color: See uni Material and Color Overview.

Distribué par :



COPIMEC Sarl au Capital de 8.000.000,00 dh / Adresse: N°237, Rue Oued Ziz - Quartier Industriel - Teldi - AGADIR - MAROC
TEL : +212 5 28 84 75 61 - +212 5 28 84 75 62 - FAX : +212 5 28 84 73 00 E-mail: contact@copimec.com Web: www.copimec.com

Sprocket

No of teeth	Bore size														Overall diameter		Pitch-diameter		Hub-diameter		A-dimension		B-dimension		Single row/One way	Double row/Two way	Molded PA6 LG	Machined PA6 N
	Pilot bore	in	0.75	0.78	0.98	1.00	1.18	1.25	1.50	1.57	2.36	2.50	3.54															
	mm	19.1	20.0	25.0	25.4	30.0	31.8	38.1	40.0	60.0	63.5	90.0	mm	in	mm	in	mm	in	mm	in								
Z06	x					●	●	■	●				92.5	3.64	100.0	3.94	70.0	2.76	35.3	1.39	58.0	2.28	x		x			
Z08	x					●	●	■	●				128.7	5.07	130.7	5.15	70.0	2.76	52.4	2.06	73.3	2.89	x		x			
Z10	x					●	●	■	●				159.8	6.29	161.8	6.37	70.0	2.76	68.9	2.71	88.9	3.50	x		x			
Z10											■		159.8	6.29	161.8	6.37	120.0	4.72	68.9	2.71	88.9	3.50	x			x		
Z12	x					●		■	●				192.5	7.58	193.2	7.61	70.0	2.76	85.3	3.36	104.6	4.12	x		x			
Z12											■		192.5	7.58	193.2	7.61	120.0	4.72	85.3	3.36	104.6	4.12	x			x		
Z16	x					●		■	●		■		257.3	10.13	256.3	10.09	120.0	4.72	117.7	4.63	126.1	4.96	x			x		

■ Molded sprocket

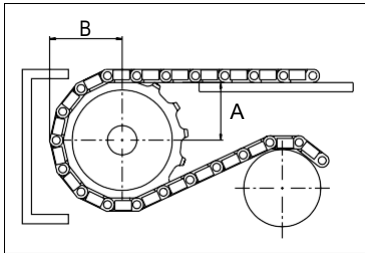
● Molded sprocket

■ Machined sprocket

● Machined sprocket



Non standard material and color: See uni Material and Color Overview.



Other sprocket sizes are available upon request.

Two-part sprocket are available upon request.

Round bores are always delivered with keyway.

Other bore sizes are available upon request.

uni Retainer Rings: See uni Retainer Ring data sheet

Width of tooth = 7.0 mm (0.28 in)

Width of sprocket = 42.3 mm (1.67 in)

Max load per sprocket shown does not take bore size into account.

Please also ensure that sufficient size shaft is chosen for corresponding load.

For correct sprocket position: See uni Assembly Instructions for uni L-SNB.

For more detailed sprocket information, contact Customer Service.

Ammeraal beltech - unichains - copimec

Distribué par :

