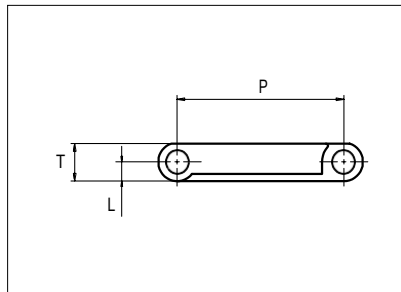




Plastic Modular Belt

Serie **uni Light EP** Type **22% Fine-meshed**



Straight running belt
 Nominal pitch: 38.1 mm (1.50 in)
 Surface type: Flat
 Surface opening: 22%
 Backflex radius: 75.0 mm (3.0 in)
 Pin diameter: 5.0 mm (0.20 in)

STANDARD

Belt material & color	PP-HW W	PP-HW B		mm	in		mm	in	
				P (Nominal)	38.1	1.50	T	8.5	0.33
Pin and lock material & color	PP-HW W PP-HW W	PP-HW B PP-HW B		L	4.3	0.17	-	-	-

Non standard material and color: See uni Material and Color Overview.

Alternative pin and lock materials: Pin: PE **W** PP-HW **W** **B** SS304 Lockpin: PBT **LG** PA6.6 **N** **D**

STRAIGHT RUNNING

Belt width		Permissible tensile force (Belt/pin material)		Belt weight (Belt/pin material)		*Min. No. drive sprocket per shaft	Number of wear strips (Min. No.)	
		PP-HW		PP-HW			**Carry (pcs)	**Return (pcs)
mm	in	N	lbf	kg/m	lb/ft			
64	2.5	325	73	0.2	0.15	2	2	2
102	4.0	523	118	0.3	0.23	2	2	2
153	6.0	784	176	0.5	0.35	2	2	2
191	7.5	979	220	0.6	0.44	2	2	2
204	8.0	1046	235	0.7	0.47	2	2	2
255	10.0	1307	294	0.9	0.58	2	2	2
306	12.0	1568	353	1.0	0.70	3	3	2
357	14.1	1830	411	1.2	0.82	3	3	2
408	16.1	2091	470	1.4	0.93	3	3	2
459	18.1	2352	529	1.6	1.05	4	4	2
510	20.1	2614	588	1.7	1.17	4	4	2
561	22.1	2875	646	1.9	1.28	4	4	2
612	24.1	3137	705	2.1	1.40	5	5	3

Additional standard belt widths are available in steps of 50.9 mm (2.00 in). Additional non-standard belt widths are available in steps of 12.7 mm (0.50 in).

1987	78.2	10183	2289	6.8	4.54	14	14	7
------	------	-------	------	-----	------	----	----	---

Additional standard belt widths are available in steps of 50.9 mm (2.00 in). Additional non-standard belt widths are available in steps of 12.7 mm (0.50 in).

2955	116.3	15144	3404	10.0	6.75	20	20	10
------	-------	-------	------	------	------	----	----	----

General belt tolerance is +0/-0.4% at 23°C/73°F and 50% RH. For exact belt width contact Customer Service. Non standard belt width on request.

*Max. Load per Drive Sprocket. Belt material: PP-HW 600 N (135 lbf)

**Max. Spacing between wear strips. Carry: 152.0 mm (6.00 in); Return: 304.0 mm (12.00 in)

= Single Link

PITCH 38.1 MM/1.50 IN

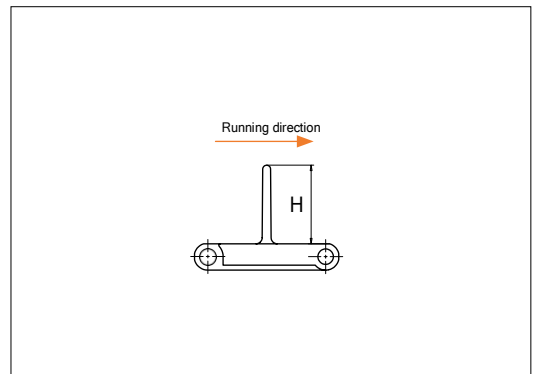
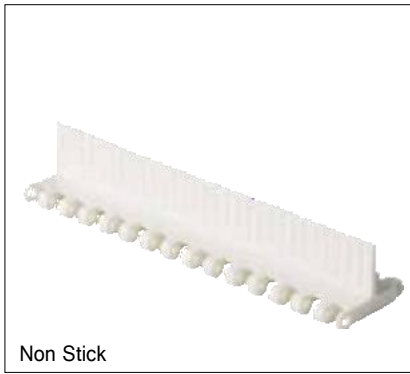


Distribué par :



Accessories

Flight/NON STANDARD



Type	Recommended Material & color	H		Link size	Width		Indent left/right	
		mm	in		mm	in	mm	in
Non Stick	POM-D W	25.4	1.00	K750	191.0	7.52	0.0	0.00
		50.8	2.00				17.5	0.69
Non Stick/ Support Ribs	POM-D W	25.4	1.00	K400	101.6	4.00	0.0	0.00
				K600	152.8	6.02	0.0	0.00
		50.8	2.00	K400	101.6	4.00	0.0	0.00
		50.8	2.00	K600	152.8	6.02	0.0	0.00
		76.2	3.00	K600	152.8	6.02	0.0	0.00

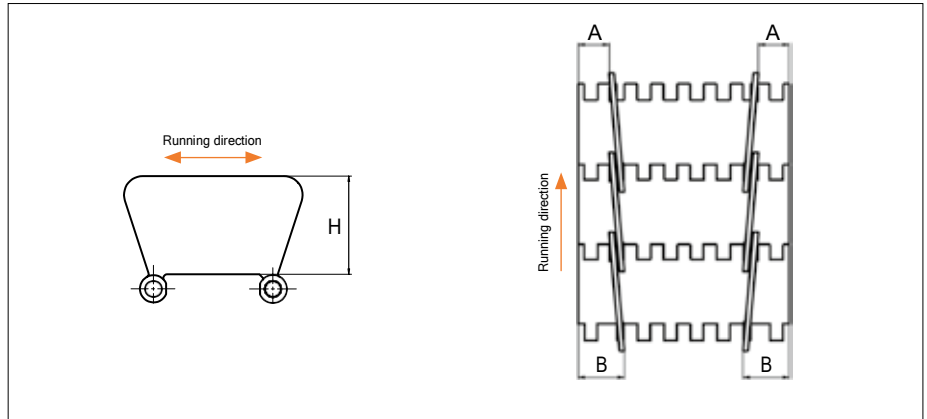
Minimum bricklaid indent for uni Light EP flights is 38.1 mm (1.50 in). increment: 12.7 mm (0.50 in).

Alternative materials: PP-I, PE.

Non Standard material and color: See uni Material and Color Overview.

Accessories

Side Guard/NON STANDARD



Type	Recommended Material & color	H		A		B	
		mm	in	mm	in	mm	in
Closed	POM-D W	31.7	1.25	15.0	0.59	23.0	0.91

Other Non Standard material and color: See uni Material and Color Overview.

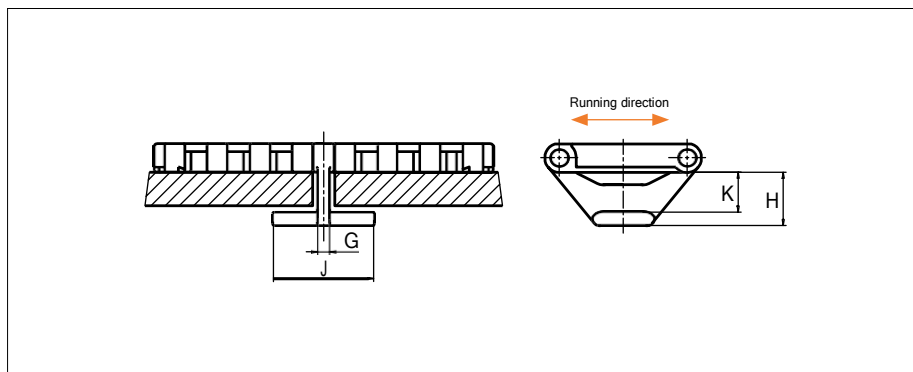


Distribué par :

Comptoir de Pièces Industrielles et Mécaniques

Accessories

Tab/NON STANDARD



Type	Reccomended Material & color	G		J		K		H	
		mm	in	mm	in	mm	in	mm	in
Bottom Hold Down	POM-D	3.5	0.14	26.0	1.02	12.4	0.49	16.4	0.65

Other Non Standard material and color: See uni Material and Color Overview.

Accessories

Reinforcement Link



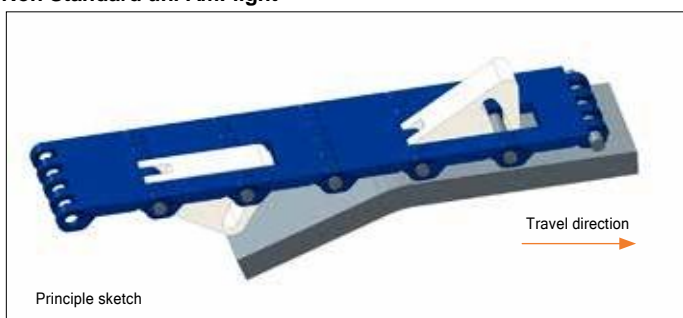
The use of uni-chains belts with the SS reinforcement /pitch control links in blanchers, cookers and other high temperature applications will reduce belt elongation due to temperature by more than 90%. This will simplify the belt take-up system and reduce maintenance. uni-chains recommends one reinforcement link per K600 module.
Note: Reinforcement links require the use of SS pins.

Type	Material & color	N/row	Lbf/row
Steel Link	SS316	1000	225

Non Standard material and color: See uni Material and Color Overview.

Accessories

Non Standard uni AmFlight



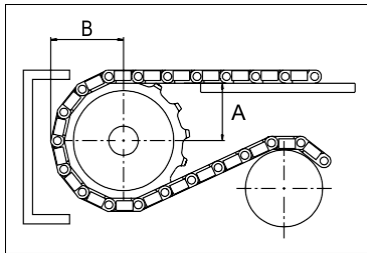
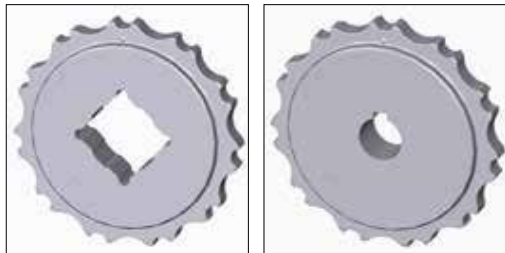
Other Non Standard option: See uni AmFlight Overview.

Sprocket

No. of teeth	Bore size						Overall diameter		Pitch-diameter		Hub-diameter		Dimension A		Dimension B		Single row/Two way	Molded	
	Pilot bore	in	1.00	1.18	1.25	1.50													1.57
	mm	25.4	30.0	31.8	38.1	40.0	mm	in	mm	in	mm	in	mm	in	mm	in			
Z07	x		●	●	●			87.8	3.46	86.0	3.39	65.0	2.56	35.2	1.39	48.3	1.90	✓	✓
Z09	x		●	●	●	■	●	111.4	4.39	110.6	4.35	90.0	3.54	48.0	1.89	60.0	2.36	✓	✓
Z10	x		●	●	●	■	●	123.3	4.85	122.7	4.83	100.0	3.94	54.3	2.14	66.0	2.60	✓	✓
Z11	x		●	●	●	■	●	135.2	5.32	135.0	5.31	110.0	4.33	60.5	2.38	72.0	2.83	✓	✓
Z12	x			●	●	●	●	147.2	5.80	147.1	5.79	120.0	4.72	66.7	2.63	78.0	3.07	✓	✓
Z15	x			●	●	●	●	183.2	7.21	183.5	7.22	120.0	4.72	85.3	3.36	96.0	3.78	✓	✓

■ Molded sprocket

● Molded sprocket



Other sprocket sizes are available upon request.

Two-part sprocket are available upon request.

Other bore sizes are available upon request.

uni Retainer Rings: See uni Retainer Ring data sheet

Width of tooth = 11.8 mm (0.47 in)

Width of sprocket = 23.2 mm (0.91 in)

Max load per sprocket shown does not take bore size into account.

Please also ensure that sufficient size shaft is chosen for corresponding load.

For correct sprocket position: See uni Assembly Instructions for uni Light EP.

For more detailed sprocket information. contact Customer Service.

Ammeraal beltech - unichains - copimec

Non standard material and color: See uni Material and Color Overview.

uni Light EP 22%/2019.05.29



Distribué par :

Comptoir de Pièces Industrielles et Mécaniques

COPIMEC Sarl au Capital de 8.000.000,00 dh / Adresse: N°237, Rue Oued Ziz - Quartier Industriel - Teldi - AGADIR - MAROC
 TEL : +212 5 28 84 75 61 - +212 5 28 84 75 62 - FAX : +212 5 28 84 73 00 E-mail: contact@copimec.com Web: www.copimec.com