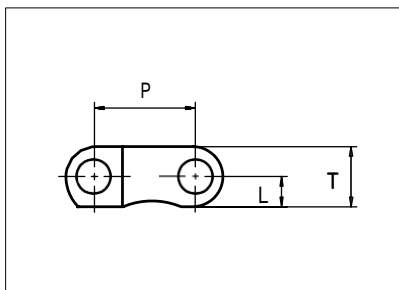
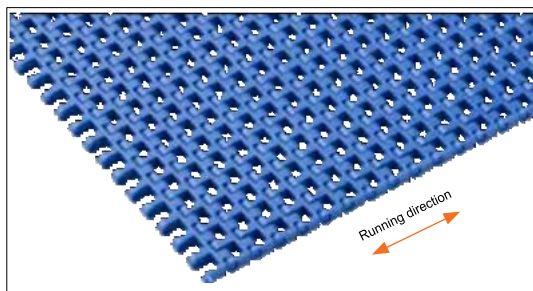




Plastic Modular Belt

Serie **uni M-TTB** Type **37%**



Straight Running
 Nominal pitch: 12.7 mm (0.50 in)
 Surface type: Flat
 Surface opening: 37%
 Backflex radius: 12.5 mm (0.49 in)
 Min flex diameter (nosebar): 19.1 mm (0.75 in)
 Pin diameter: 4.0 mm (0.16 in)

STANDARD

Belt material & color	PP W B	POM-D W B		mm	in		mm	in
Pin material & color	PP W	PA6.6 B		P (Nominal)	12.7	0.50	T	7.5 / 0.29
				L	3.8	0.15	-	- / -

Non standard material and color: See uni Material and Color Overview.

Alternative pin material: PA6.6 B PP W

STRAIGHT RUNNING

Belt width		Permissible tensile force (Belt/pin material)				Belt weight (Belt/pin material)				Min No drive sprocket per haft	Number of wear strips (min no)	
		POM-D/PA6.6		PP/PP		POM-D/PA6.6		PP/PP			**Carry (pcs)	**Return (pcs)
mm	in	N	lbf	N	lbf	kg/m	lb/ft	kg/m	lb/ft			
77	3.0	1733	389	1001	225	0.4	0.30	0.3	0.22	2	2	2
154	6.1	3464	779	2002	450	0.9	0.60	0.6	0.43	2	2	2
231	9.1	5196	1168	3002	675	1.3	0.90	1.0	0.65	3	2	2
308	12.1	6927	1557	4003	900	1.8	1.20	1.3	0.87	4	3	2
385	15.2	8659	1947	5003	1125	2.2	1.50	1.6	1.09	4	3	2
462	18.2	10391	2336	6004	1350	2.7	1.80	1.9	1.30	5	4	2
539	21.2	12122	2725	7004	1575	3.1	2.10	2.3	1.52	6	4	2
616	24.2	13854	3114	8005	1799	3.6	2.40	2.6	1.74	7	5	3
693	27.3	15586	3504	9005	2024	4.0	2.70	2.9	1.96	7	5	3
770	30.3	17317	3893	10006	2249	4.5	3.00	3.2	2.17	8	6	3
847	33.3	19049	4282	11006	2474	4.9	3.30	3.6	2.39	9	6	3
924	36.4	20781	4671	12007	2699	5.4	3.60	3.9	2.61	10	7	4
1001	39.4	22512	5061	13007	2924	5.8	3.90	4.2	2.82	11	7	4

Additional standard belt widths are available in steps of 77.0 mm (3.03 in). Additional non-standard belt widths are available in steps of 12.7 mm (0.50 in).

2002	78.8	45045	10126	26026	5851	11.6	7.80	8.4	5.65	21	14	7
------	------	-------	-------	-------	------	------	------	-----	------	----	----	---

Additional standard belt widths are available in steps of 77.0 mm (3.03 in). Additional non-standard belt widths are available in steps of 12.7 mm (0.50 in).

2925	115.2	65813	14795	38025	8548	17.0	11.40	12.3	8.26	30	20	10
------	-------	-------	-------	-------	------	------	-------	------	------	----	----	----

General belt tolerance is +0/-0.4% at 23°C/73°F and 50% RH. For exact belt width contact Customer Service. Non standard belt width on request.

*Max. Load per Drive Sprocket. Belt material: POM-D 1500 N (337 lbf), PP 1000 N (225 lbf).
 **Max. Spacing between wear strips, Carry: 152.0 mm (6.00 in); Return: 304.0 mm (12.00 in).

= Simple Link

Member of Ammega Group. ammega.com



Distribué par :

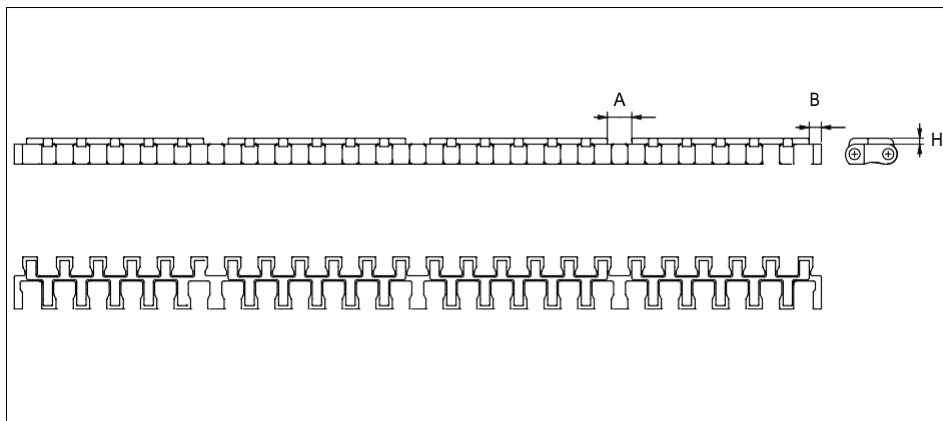
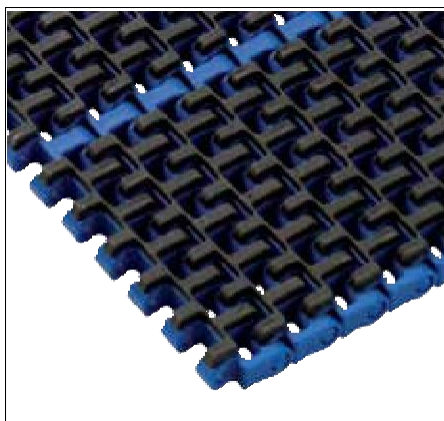


COPIMEC Sarl au Capital de 8.000.000,00 dh / Adresse: N°237, Rue Oued Ziz – Quartier Industriel - Teldi – AGADIR - MAROC
 TEL : +212 5 28 84 75 61 – +212 5 28 84 75 62 – FAX : +212 5 28 84 73 00 E-mail: contact@copimec.com Web: www.copimec.com

PITCH 12.7 MM/0.50 IN

Accessories

Rubber Top

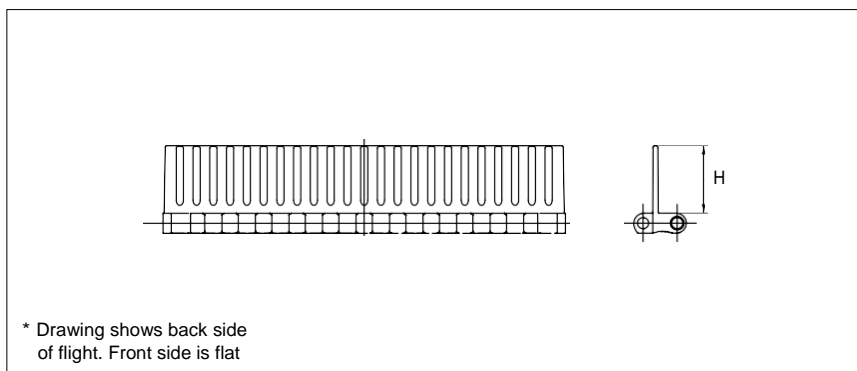
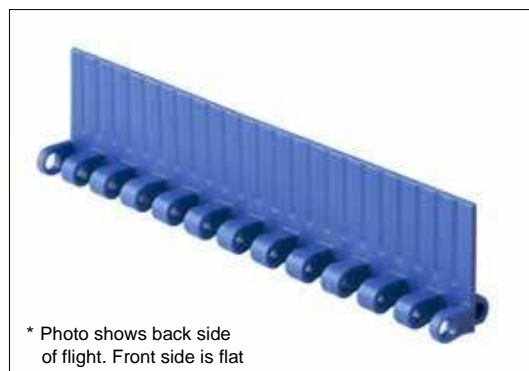


Type	Belt material & color	Rubber material & color	A		B		H		Link size	Width	
			mm	in	mm	in	mm	in		mm	in
Flat	PP W	03 W	9.2	0.36	4.6	0.18	2.2	0.09	K600	154.0	6.1
	PP B	03 K								308.0	12.1

Other Non Standard Rubber profiles: See uni Rubber Profile Overview.
Backflex radius for Rubber Top: 28 mm (1.10in).

Accessories

Flight



Type	Material & color	H		Link size	Width	
		mm	in		mm	in
Flat/Non Stick*	POM-D W B	25.4	1.00	K600	152.0	5.98

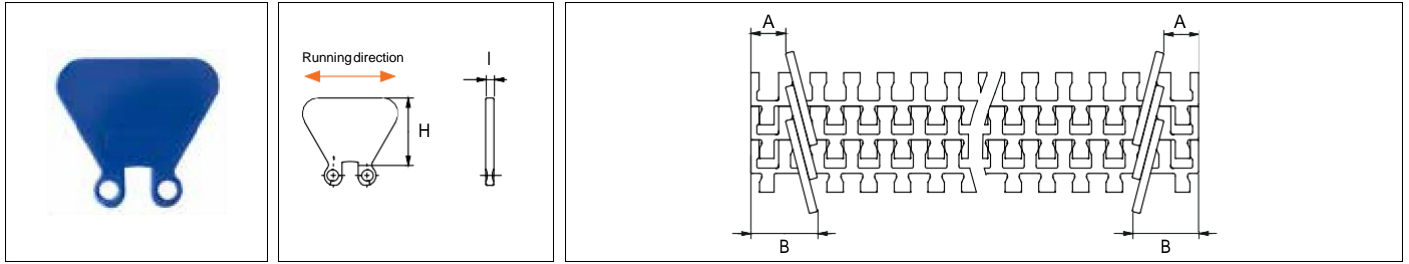
Non standard material and color: See uni Material and Color Overview.
Minimum indent is for uni M-TTB flight 0 mm. Increment: 12.7 mm (0.50 in).

Distribué par :



Accessories

Side Guard



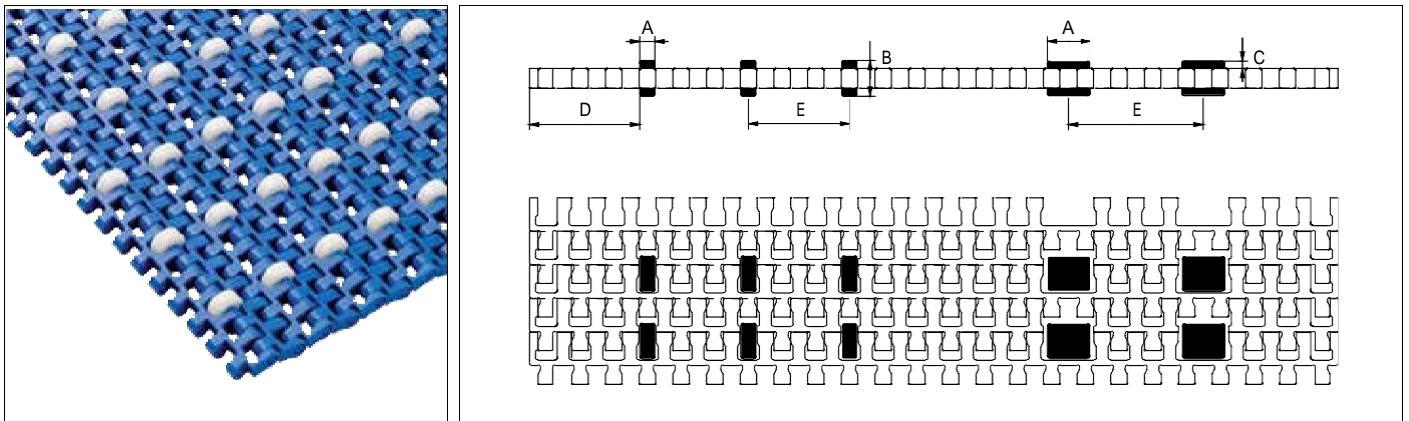
Type	Material & color	A		B		H		I	
		mm	in	mm	in	mm	in	mm	in
Closed	POM-D W B	13.0	0.50	25.0	0.98	25.4	1.00	3.1	0.12

Non standard material and color: See uni Material and Color Overview.

*Minimum indent is for uni M-TTB Side Guard. Increment: 12.7 mm (0.50 in).

Accessories

Roller

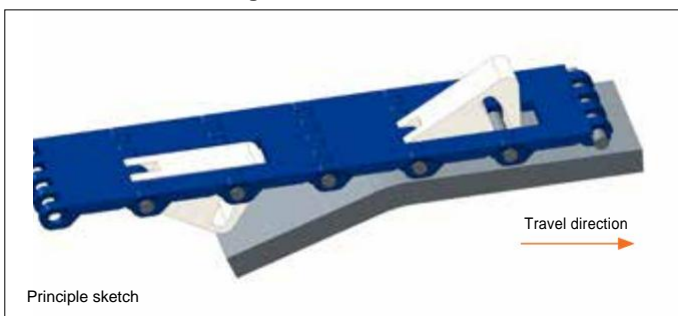


Type	Roller material & color	A		B		C		D (min)		E (min)	
		mm	in	mm	in	mm	in	mm	in	mm	in
Plastic	POM-D W	5.7	0.22	13.0	0.51	2.75	0.11	22.0	0.87	25.4	1.00
		16.0	0.62	13.0	0.51	2.75	0.11	22.0	0.87	38.1	1.50

Non standard Roller material and color: See uni Material and Color Overview.

Accessories

Non standard uni AmFlight for uni M-TTB



Other non standard option: See uni Amflight Overview.

Distribué par :

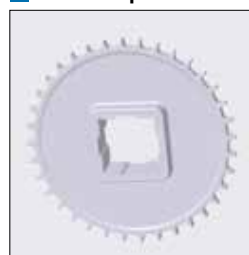


COPIMEC Sarl au Capital de 8.000.000,00 dh / Adresse: N°237, Rue Oued Ziz – Quartier Industriel - Teldi – AGADIR - MAROC
 TEL : +212 5 28 84 75 61 – +212 5 28 84 75 62 – FAX : +212 5 28 84 73 00 E-mail: contact@copimec.com Web: www.copimec.com

Sprocket

No. of teeth	Bore size										Overall diameter		Pitch-diameter		Hub-diameter		Dimension A		Dimension B		Single row/Two way		Molded	PAG LG	
	Pilot bore	in		mm		mm		mm		mm															
	mm	19.1	20.0	25.0	25.4	30.0	31.8	38.1	40.0	mm	in	mm	in	mm	in	mm	in	mm	in	mm	in				
Z12	<input type="checkbox"/>		●	●										52.0	2.05	49.1	1.93	40.0	1.57	20.0	0.79	28.2	1.11	<input type="checkbox"/>	<input type="checkbox"/>
Z15	<input type="checkbox"/>			●	●									64.6	2.54	61.1	2.41	52.0 244.0	12.04 21.74	26.1	1.03	34.2	1.35	<input type="checkbox"/>	<input type="checkbox"/>
Z19														80.1	3.15	77.2	3.04	70.0	2.76	34.3	1.35	42.3	1.66	<input type="checkbox"/>	<input type="checkbox"/>
Z24	<input type="checkbox"/>			●	●	●	●	●	●	●	●	●	●	102.1	4.02	97.3	3.83	59.0 272.0	12.32 22.83	44.5	1.75	52.4	2.06	<input type="checkbox"/>	<input type="checkbox"/>
Z36	<input type="checkbox"/>													152.3	6.01	145.7	5.74	72.0	2.83	68.8	2.71	76.6	3.01	<input type="checkbox"/>	<input type="checkbox"/>

Molded sprocket

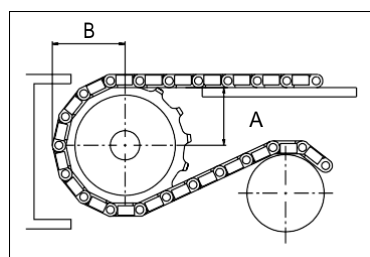


Other sprocket sizes are available upon request.
 Other bore sizes on sprockets are available upon request.
 Max. load per sprocket shown does not take bore size into account.
 Please also ensure that sufficient size shaft is chosen for corresponding load.
 Width of tooth : 6.5 mm (0.26 in)
 Width of One-part sprocket : 25.0 mm (0.98 in)

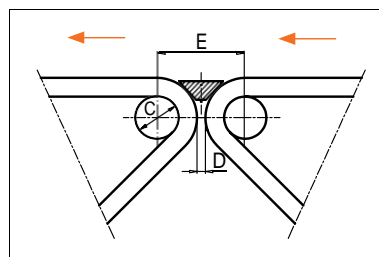
uni UltraClean Two-Part Sprocket

No. of teeth	Bore size		Overall diameter		Pitch-diameter		Hub-diameter		Dimension		Dimension B		Single row/One way	Moulded	PA6 W
	in	1.57													
	mm	40.0	mm	in	mm	in	mm	in	mm	in	mm	in			
Z24		■	102.1	4.02	97.3	3.83	80.0	3.15	44.5	1.75	52.4	2.06	<input type="checkbox"/>	<input type="checkbox"/>	
Z36		■	152.3	6.0	145.7	5.74	126.0	4.96	68.8	2.71	76.6	3.01	<input type="checkbox"/>	<input type="checkbox"/>	

Moulded uni UltraClean TwoPart Sprocket



Nosebars Min. Dimensions



	mm	in
C	19.0	0.75
D	4.0	0.16
E	40.6	1.60

Width of UltraClean Two-part sprocket: 44.0mm (1.73 in)
 Width of UltraClean Two-part sprocket, tooth: 6.5 mm (0.26 in)

uni Retainer Rings: See uni Retainer Ring data sheet.
 For correct sprocket position: See uni Assembly Instructions for uni M-TTB.
 For more detailed sprocket information, contact Customer Service.

Distribué par :

