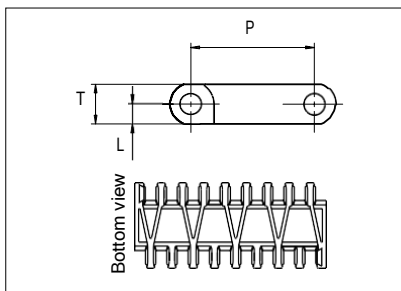




Plastic Modular Belt

Serie **uni OPB 4V** Type **36%**



Straight running belt
 Nominal pitch: 50.0 mm (1.97 in)
 Surface type: Flat
 Surface opening: 36%
 Backflex radius: 75.0 mm (3.00 in)
 Pin diameter: 8 mm (1.97 in)

*uni-chains recommends this travel direction. However, travel in both directions is possible.

Note: uni OPB 36% 4V are listed in the USDA "Accepted Meat and Poultry Equipment" publication as accepted food contact.

Belt material & color	PP W		mm	in		mm	in	
Pin and lock material & color	PP W		P (Nominal)	50.0	1.97	T	16.0	0.63
			L	8.0	0.31	-	-	-

Non standard material and color: See uni Material and Color Overview.

Alternative pin and lock materials: Trilock: PP-HW **LB** Endlock: PP **W G B** and PE **W B** Lockpin: PE **W** PA6.6 **N B** and PBT **LG**
 Pin: PP **W** PE **W** PBT **LG** SS304 and SS316

Belt width		Permissible tensile force (Belt/pin material)		Belt weight (Belt/pin material)		*Min. No. drive sprocket per shaft	Number of wear strips (Min. No.)	
		PP/PP		PP/PP			**Carry (pcs)	**Return (pcs)
mm	in	N	lbf	kg/m	lb/ft			
151	5.9	1661	373	1.0	0.65	2	2	2
302	11.9	3322	747	1.9	1.30	3	3	2
453	17.8	4983	1120	2.9	1.95	4	4	2
604	23.8	6644	1494	3.9	2.60	5	5	3
755	29.7	8305	1867	4.8	3.25	6	6	3
906	35.7	9966	2240	5.8	3.90	7	7	4
1057	41.6	11627	2614	6.8	4.55	8	8	4
1208	47.6	13288	2987	7.7	5.20	9	9	5
1359	53.5	14949	3361	8.7	5.85	10	10	5
1510	59.4	16610	3734	9.7	6.49	11	11	6
1661	65.4	18271	4107	10.6	7.14	12	12	6
1812	71.3	19932	4481	11.6	7.79	13	13	7

Additional standard belt widths are available in steps of 151.0 mm (5.94 in). Additional non-standard belt widths are available in steps of 33.6 mm (1.32 in).

2567	101.1	28237	6348	16.4	11.04	18	18	9
------	-------	-------	------	------	-------	----	----	---

Additional standard belt widths are available in steps of 151.0 mm (5.94 in). Additional non-standard belt widths are available in steps of 33.6 mm (1.32 in).

2869	113.0	31559	7094	18.4	12.34	20	20	10
------	-------	-------	------	------	-------	----	----	----

General belt tolerance is +0/-0.4% at 23°C/73°F and 50% RH. For exact belt width contact Customer Service. Non standard belt width on request.

*Max. Load per Drive Sprocket. Belt material: POM 2500 N (562 lbf), PP 1200 N (270 lbf), PE 500 N (270 lbf)

**Max. Spacing between wear strips, Carry: 152 mm (6 in); Return: 304 mm (12 in).

= Single Link



Distribué par :



COPIMEC Sarl au Capital de 8.000.000,00 dh / Adresse: N°237, Rue Oued Ziz - Quartier Industriel - Teldi - AGADIR - MAROC
 TEL : +212 5 28 84 75 61 - +212 5 28 84 75 62 - FAX : +212 5 28 84 73 00 E-mail: contact@copimec.com Web: www.copimec.com

STANDARD

STRAIGHT RUNNING

PITCH 50.0 MM/1.97 IN

Accessories

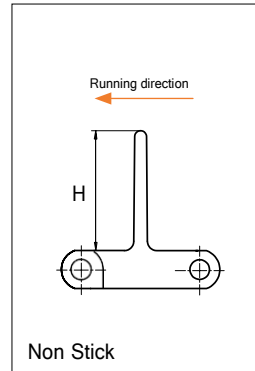
Flight



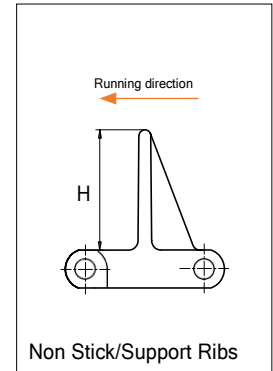
Non Stick



Non Stick/Support Ribs



Non Stick



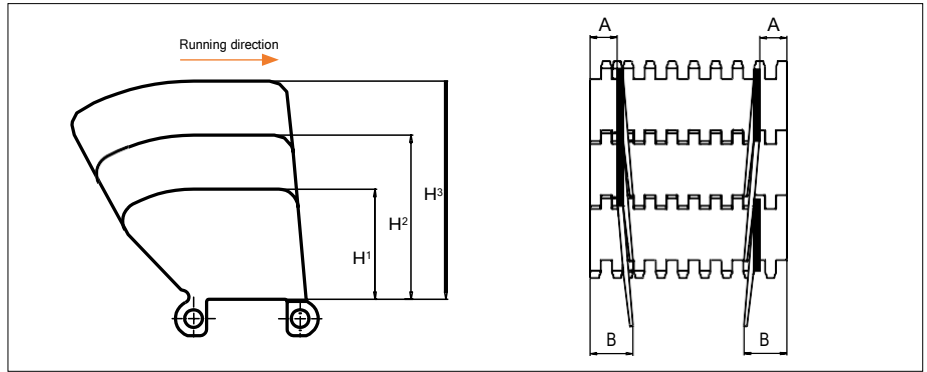
Non Stick/Support Ribs

Type	Flight material & color	H		Link size	Width		Indent	
		mm	in		mm	in	mm	in
Non Stick	PP-HW B	50.8	2.00	K600	151.0	5.94	0.0	0.00
Non Stick/ Support Ribs		76.2	3.00					
		101.6	4.00					

Non Standard material and color: See uni Material and Color Overview.

Accessories

Side Guard



Type	Material & color	H ¹		H ²		H ³		A*		B*	
		mm	in	mm	in	mm	in	mm	in	mm	in
Closed	PP-HW B	51.8	2.04	77.2	3.04	102.6	4.04	21.0	0.83	34.0	1.34

* Min. indent Increment : 8.4 mm (0.33 in)

Note: Backflex radius when side guards are used: 200.0 mm (7.90 in)

Non Standard material and color: See uni Material and Color Overview.



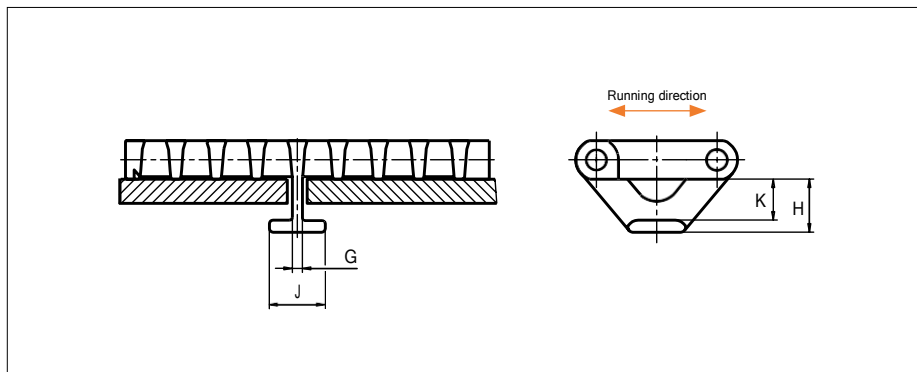
Distribué par :

Comptoir de Pièces Industrielles et Mécaniques

COPIMEC Sarl au Capital de 8.000.000,00 dh / Adresse: N°237, Rue Oued Ziz - Quartier Industriel - Teldi - AGADIR - MAROC
 TEL : +212 5 28 84 75 61 - +212 5 28 84 75 62 - FAX : +212 5 28 84 73 00 E-mail: contact@copimec.com Web: www.copimec.com

Accessories

Tab/NON STANDARD



Type	Belt material & color	G		H		J		K	
		mm	in	mm	in	mm	in	mm	in
Bottom Hold Down	POM-D N	4.2	0.17	22.0	0.87	23.2	0.92	17.0	0.67
	POM-LF B								
	PP W								

Non Standard material and color: See uni Material and Color Overview.

Distribué par : **COPIMEC**
Comptoir de Pièces Industrielles et Mécaniques

COPI MEC Sarl au Capital de 8.000.000,00 dh / Adresse: N°237, Rue Oued Ziz - Quartier Industriel - Teldi - AGADIR - MAROC
 TEL : +212 5 28 84 75 61 - +212 5 28 84 75 62 - FAX : +212 5 28 84 73 00 E-mail: contact@copimec.com Web: www.copimec.com

Sprocket

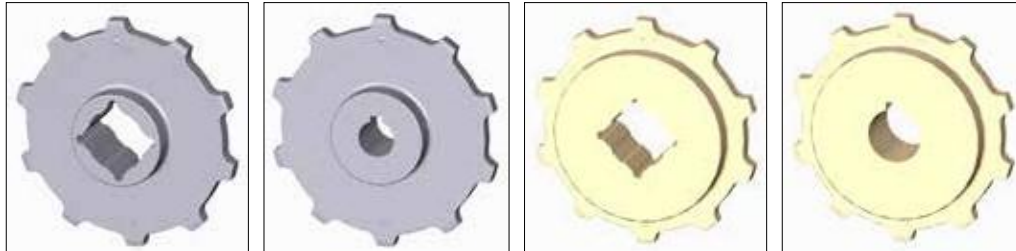
No of teeth	Bore size													Overall diameter		Pitch-diameter		Hub-diameter		Dimension A		Dimension B		Single row/Two way	Double row/Two way	Molded PA6	Machined PA6 N
	Pilot Bore	in	0.75	0.78	0.98	1.00	1.18	1.25	1.50	1.57	2.36	2.50	3.54														
	mm	19.1	20.0	25.0	25.4	30.0	31.8	38.1	40.0	60.0	63.5	90.0	mm	in	mm	in	mm	in	mm	in							
Z06	x				●	●	●	■	●				94.5	3.72	100.3	3.95	65	2.56	35.5	1.40	58.6	2.31	x		x		
Z08	x				●	●	●	■	●				129	5.08	131.1	5.16	65	2.56	52.6	2.07	74	2.91	x		x		
Z10	x					●	●	■	●				160.1	6.30	162.4	6.39	65	2.56	69.2	2.72	89.7	3.53	x		x		
Z12	x					●	●	■	●				191.5	7.54	193.9	7.63	65	2.56	85.7	3.37	105.5	4.15	x		x		
Z13	x					●		■	●				207.3	8.16	209.7	8.26	72	2.83	93.8	3.69	113.4	4.46	x		x		
Z13											■		207.3	8.16	209.7	8.26	150	5.91	93.8	3.69	113.4	4.46	x			x	
Z16	x					●		■	●		■		254.8	10.03	257.3	10.13	200	7.87	118.2	4.65	137.1	5.40	x			x	

■ Molded sprocket

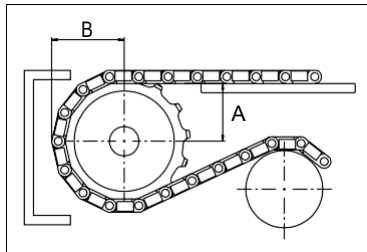
● Molded sprocket

■ Machined sprocket

● Machined sprocket



Non standard material and color: See uni Material and Color Overview.



Other sprocket sizes are available upon request.
 Two-part sprocket are available upon request.
 Round bores are always delivered with keyway.
 Other bore sizes are available upon request.
 uni Retainer Rings: See uni Retainer Ring data sheet
 Width of tooth = 11.0 mm (0.43 in)
 Width of sprocket = 42.3 mm (1.67 in)

Max load per sprocket shown does not take bore size into account.
 Please also ensure that sufficient size shaft is chosen for corresponding load.

For correct sprocket position: See uni Assembly Instructions for uni OPB.
 For more detailed sprocket information, contact Customer Service.

Ammeraal beltech - unichains - copimec

uni OPB 4V 36%/160707