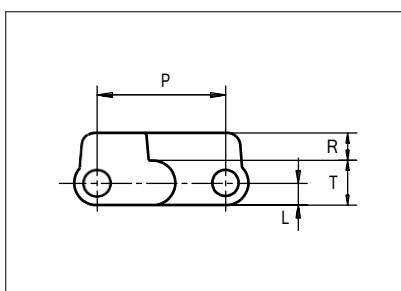
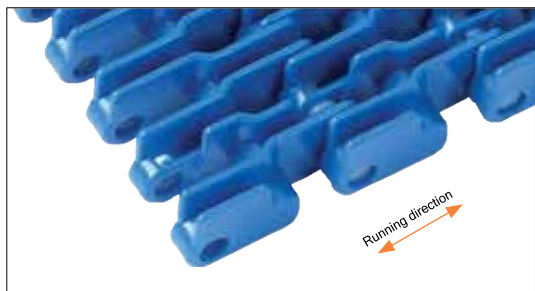




Plastic Modular Belt

Series **uni SNB** Type **M2 34% Rib**



Straight running belt
 Nominal pitch: 25.4 mm (1.00 in)
 Surface type: Rib Top
 Surface opening: 34%
 Backflex radius: 30.0 mm (1.20 in)
 Pin diameter: 5.0 mm (0.20 in)

Belt material & color	POM-SLF B	PP B		mm	in		mm	in
			P (Nominal)	25.4	1.00	R	5.5	0.22
Pin material & color	PP B		L	4.4	0.17	T	8.8	0.35

Non standard material and color: See uni Material and Color Overview.

Alternative pin and lock materials: Pin: PA6.6 **B** SS304

Endlock: PP-I **B**

Lockpin: PP **W** PBT **LG** PA6.6 **D** **N** PE **N**

Belt width		Permissible tensile force (Belt/pin material)				Belt weight (Belt/pin material)				*Min. No. drive sprocket per shaft	Number of wear strips (Min. No.)	
		POM-SLF/PP		PP/PP		POM-SLF/PP		PP/PP			**Carry (pcs)	**Return (pcs)
mm	in	N	lbf	N	lbf	Kg/m	lb/ft	Kg/m	lb/ft			
77	3.0	1810	407	1155	260	0.5	0.33	0.3	0.22	2	2	2
153	6.0	3596	808	2295	516	1.0	0.65	0.7	0.44	2	2	2
229	9.0	5382	1210	3435	772	1.4	0.97	1.0	0.66	2	2	2
305	12.0	7168	1611	4575	1028	1.9	1.29	1.3	0.88	3	3	2
381	15.0	8954	2013	5715	1285	2.4	1.61	1.6	1.10	3	3	2
457	18.0	10740	2414	6855	1541	2.9	1.93	2.0	1.32	4	4	2
533	21.0	12526	2816	7995	1797	3.4	2.26	2.3	1.54	4	4	2
609	24.0	14312	3217	9135	2054	3.8	2.58	2.6	1.76	5	5	3
685	27.0	16098	3619	10275	2310	4.3	2.90	2.9	1.98	5	5	3
761	30.0	17884	4020	11415	2566	4.8	3.22	3.3	2.20	6	6	3
837	33.0	19670	4422	12555	2822	5.3	3.54	3.6	2.42	6	6	3
913	35.9	21456	4823	13695	3079	5.8	3.87	3.9	2.64	7	7	4
989	38.9	23242	5225	14835	3335	6.2	4.19	4.3	2.86	7	7	4

Additional standard belt widths are available in steps of 76.1 mm (3.00 in). Additional non-standard belt widths are available in steps of 12.7 mm (0.50 in).

1979	77.9	46507	10455	29685	6673	12.5	8.38	8.5	5.72	14	14	7
------	------	-------	-------	-------	------	------	------	-----	------	----	----	---

Additional standard belt widths are available in steps of 76.1 mm (3.00 in). Additional non-standard belt widths are available in steps of 12.7 mm (0.50 in).

2969	116.9	69772	15685	44535	10011	18.7	12.57	12.8	8.58	20	20	10
------	-------	-------	-------	-------	-------	------	-------	------	------	----	----	----

General belt tolerance is +0/-0.4% at 23°C/73°F and 50% RH. For exact belt width contact Customer Service. Non standard belt width on request.

*Max. Load per Drive Sprocket. Belt material: POM-D 1400 N (315 lbf), PP 1100 N (247 lbf).

**Max. Spacing between wear strips, Carry: 152.0 mm (6.00 in); Return: 304.0 mm (12.00 in).

= Single Link



Distribué par :



COPIMEC Sarl au Capital de 8.000.000,00 dh / Adresse: N°237, Rue Oued Ziz - Quartier Industriel - Teldi - AGADIR - MAROC
 TEL : +212 5 28 84 75 61 - +212 5 28 84 75 62 - FAX : +212 5 28 84 73 00 E-mail: contact@copimec.com Web: www.copimec.com

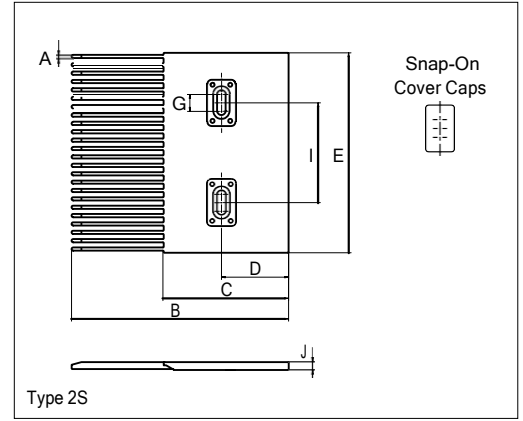
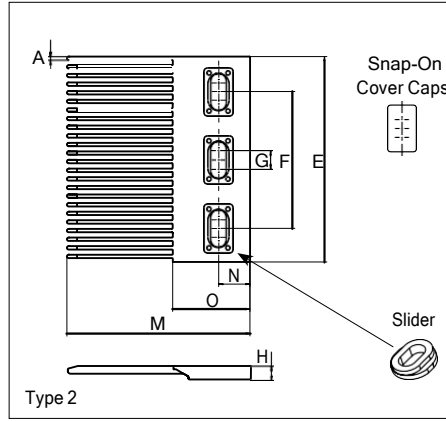
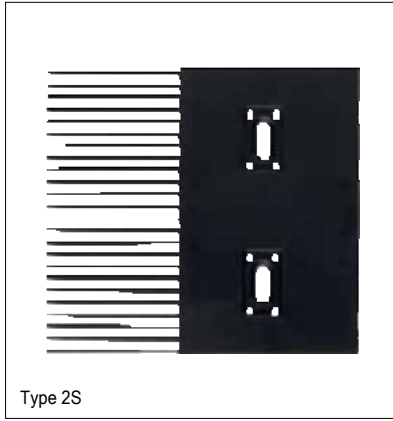
STANDARD

STRAIGHT RUNNING

PITCH 25.4 MM/1.00 IN

Accessories

Finger Plates



Type	Material & color	A		B		C		D		E		F	
		mm	in	mm	in	mm	in	mm	in	mm	in	mm	in
Single Sided	POM-EC K	2.5	0.10	165.0	6.50	95.0	3.74	51.0	2.01	152.1	5.99	100.0	3.94
Single Sided													
G		H		I		J		M		N		O	
mm	in	mm	in	mm	in	mm	in	mm	in	mm	in	mm	in
12.0	0.47	10.3	0.41	76.0	3.00	6.0	0.24	135.0	5.31	23.0	0.91	57.0	2.24

All uni-chains belt systems are available in a raised rib version that can be supplied with matching finger plates also called combs.

The finger plates are supplied with cover caps which can be attached when the finger plate has been installed. The cover caps can be removed by using a screwdriver that can be inserted between the cover and finger plate. In order to adjust to belt width variations caused by temperature fluctuations, a slider facilitates the sideways movement of the finger plates.

Non Standard material and color: See uni Material and Color Overview.

Sprocket

No. of teeth	Bore size									Overall diameter		Pitch diameter		Hub diameter		Dimension A		Dimension B		Single row/Two way	Molded PA6 LG
	Pilot Bore	in		1.00		1.25		1.50													
	mm	25.4	30.0	31.8	38.1	40.0	60.0	63.5	mm	in	mm	in	mm	in	mm	in					
Z10	✓	●	●	●	■	●			86.0	3.39	82.2	3.24	65.0	2.56	34.7	1.37	45.5	1.79	✓	✓	
Z12	✓	●	●	●	■	■			103.2	4.06	98.1	3.86	65.0	2.56	43.0	1.69	53.5	2.11	✓	✓	
Z18	✓		●	●	■	■			151.9	5.98	146.3	5.76	65.0	2.56	67.6	2.66	77.6	3.06	✓	✓	
Z18	✓						●	●	151.9	5.98	146.3	5.76	120.0	4.72	67.6	2.66	77.6	3.06	✓	✓	
Z19	✓		●	●	■	■			160.0	6.30	154.3	6.07	65.0	2.56	71.7	2.82	81.6	3.21	✓	✓	
Z19	✓						●	●	160.0	6.30	154.3	6.07	120.0	4.72	71.7	2.82	81.6	3.21	✓	✓	
Z20	✓		●	●	■	■			168.2	6.62	162.4	6.39	65.0	2.56	75.8	2.98	85.6	3.37	✓	✓	
Z20	✓						●	●	168.2	6.62	162.4	6.39	120.0	4.72	75.8	2.98	85.6	3.37	✓	✓	

■ Molded sprocket

● Molded sprocket

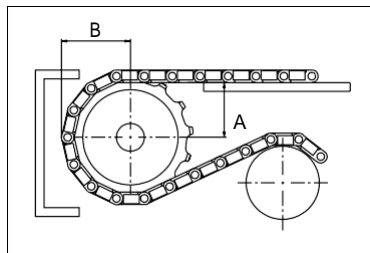


Other sprocket sizes are available upon request.
 Other bore sizes on sprockets are available upon request.
 Max. load per sprocket shown does not take bore size into account.
 Please also ensure that sufficient size shaft is chosen for corresponding load.
 Width of tooth = Single row: 6.0 mm (0.24 in)
 Width of One-part sprocket = Single row: 25.0 mm (0.98 in)

uni UltraClean Two-Part Sprocket

No. of teeth	Bore size					Overall diameter		Pitch diameter		Hub diameter		Dimension A		Dimension B		Single row/Two way	Moulded PA6
	in	1.50	1.57	2.36	2.50												
	mm	38.1	40.0	60.0	63.5	mm	in	mm	in	mm	in	mm	in				
Z12		■	■			103.2	4.06	98.1	3.86	80.0	3.15	43	1.69	53.5	2.11	✓	✓
Z15		■	■			127.5	5.02	122.2	4.81	80.0	3.15	55.4	2.18	65.5	2.58	✓	✓
Z19		1 ■	1 ■	2 ■	2 ■	160.0	6.30	154.3	6.07	118.0 126.0	4.65 4.96	71.7	2.82	81.6	3.21	✓	✓
Z20			■			168.2	6.62	162.4	6.39	118	118.0	75.8	2.98	85.6	3.37	✓	✓

■ Moulded uni UltraClean TwoPart Sprocket



Width of UltraClean Two-part sprocket = Single row: 44.0 mm (1.73 in)
 Width of UltraClean Two-part sprocket, tooth = Single row: 6.0 mm (0.24 in)

uni Retainer Rings: See uni Retainer Ring data sheet.
 For correct sprocket position: See uni Assembly Instructions for uni SNB M2.
 For more detailed sprocket information, contact Customer Service.

Ammeraal beltech - unichains - copimec



Distribué par :